

EasyScopeX Installation Guide

EasyScopeX is a software application that provides computer control and data collection from a number of SIGLENT oscilloscopes, including the SDS1000, SDS1000X/X+, SDS1000X-E, and SDS2000/X product families. Before using **EasyScopeX**, you need to know the configuration requirements and installation procedures of the software.

System Requirements

Before using **EasyScopeX** Software, ensure that your computer meets the following configuration requirements.

Hardware Configuration Requirements

- 1GHz or higher processor
- 200M or more hard disk space
- 1024x768 monitor resolution or above
- 256M or more RAM
- USB or LAN interface and cable

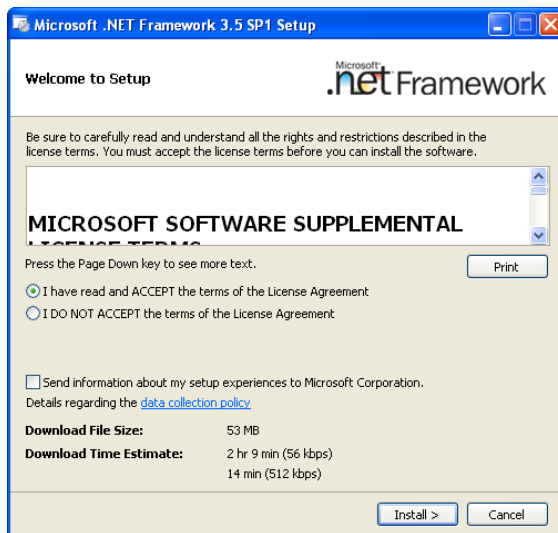
Running Environment

- Microsoft Windows XP, 2000, Win7, 8, 10 (32bit and 64bit)
- .NET framework 3.5 SP1
- National Instruments NI-VISA library version 5.4 or higher

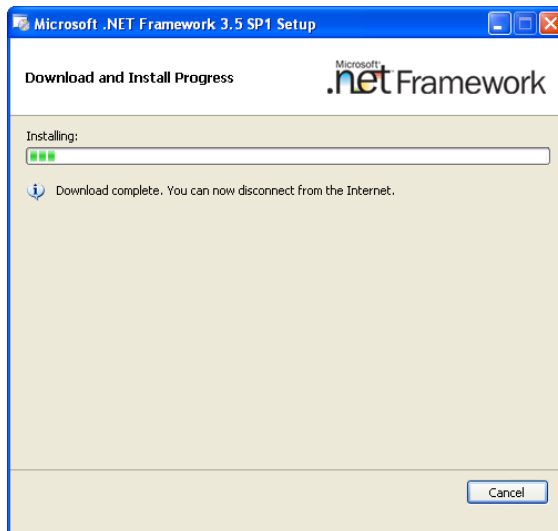
The application you are installing requires the Microsoft .NET framework version 3.5 to run. You can download the [Microsoft .NET Framework 3.5 SP1](#) package directly from Microsoft. This is a small 3 MB download with just the .NET framework installer. When you run it, the installer downloads the actual framework components that need to be installed on your computer. Once you've installed the .NET framework, you can continue installing the application.

If you plan to install version 3.5 of the .NET framework on a large number of computers, you can also download the [full package of the Microsoft .NET Framework 3.5 SP1](#). This 231 MB download comes directly from Microsoft. The small 3 MB installer likely needs to download much less than this, depending on what is already present on your computer. The installation steps are as follows:

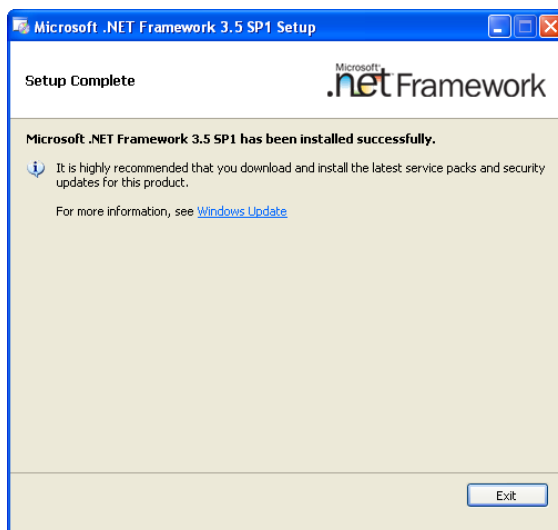
- a. Double click the dotnetfx35.exe , launch the install process, dialog as shown below:



- b. Choose ACCEPT, click Install, dialog as shown above:

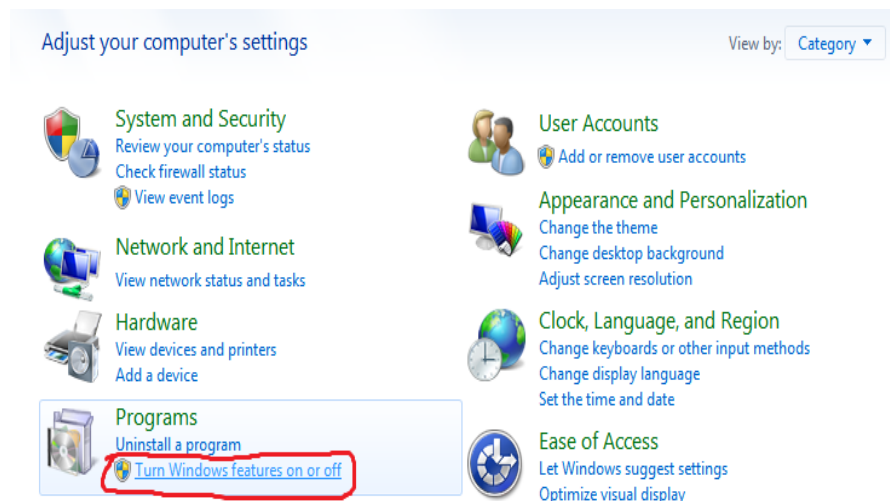


- c. Wait for the installation to complete and then Click "Exit"



.Net Framework 3.5 is now installed on the PC. When installing on Windows 7(64 bits) PC complete the following steps to use it:

- Open the Start menu and click "Control Panel".
- Under the "Programs" category, click the "Turn Windows features on or off" link text.



- c. Uncheck the Microsoft .NET Framework 3.5.1 entry. Click OK to accept this setting and return to Turn Windows Features on or off to re-enable Microsoft .NET Framework 3.5.1 by checking the box.

NI-VISA

Before using **EasyScopeX**, please make sure that you have properly installed the latest version of National Instruments NI-VISA Software.

NI-VISA is a communication library that enables computer communications to instrumentation. There are two available VISA packages: A full version and the Run-Time Engine. The full version includes NI device drivers and a tool named NI MAX; a user interface to control the device. While the drivers and NI MAX can be useful, they are not required for EasyScopeX. The Run-Time Engine is a much smaller file and is recommended for use with EasyScopeX.

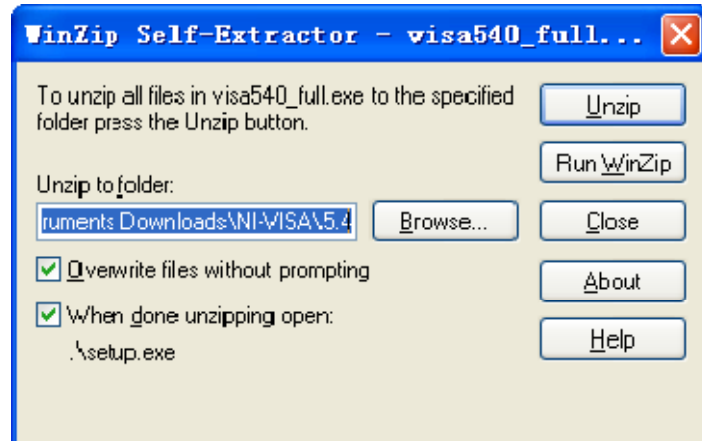
For convenience, you can get the NI-VISA 5.4 full version from:

<http://www.ni.com/download/ni-visa-5.4/4230/en/>. You can also download [NI-VISA Run-Time Engine 5.4](#) to your PC and install it as default selection. Its installation process is similar with the full version.

Follow these steps to install NI-VISA (The full version of NI-VISA 5.4 is used in this example):

- a. Download the appropriate version of NI-VISA (Run-time engine is recommended)

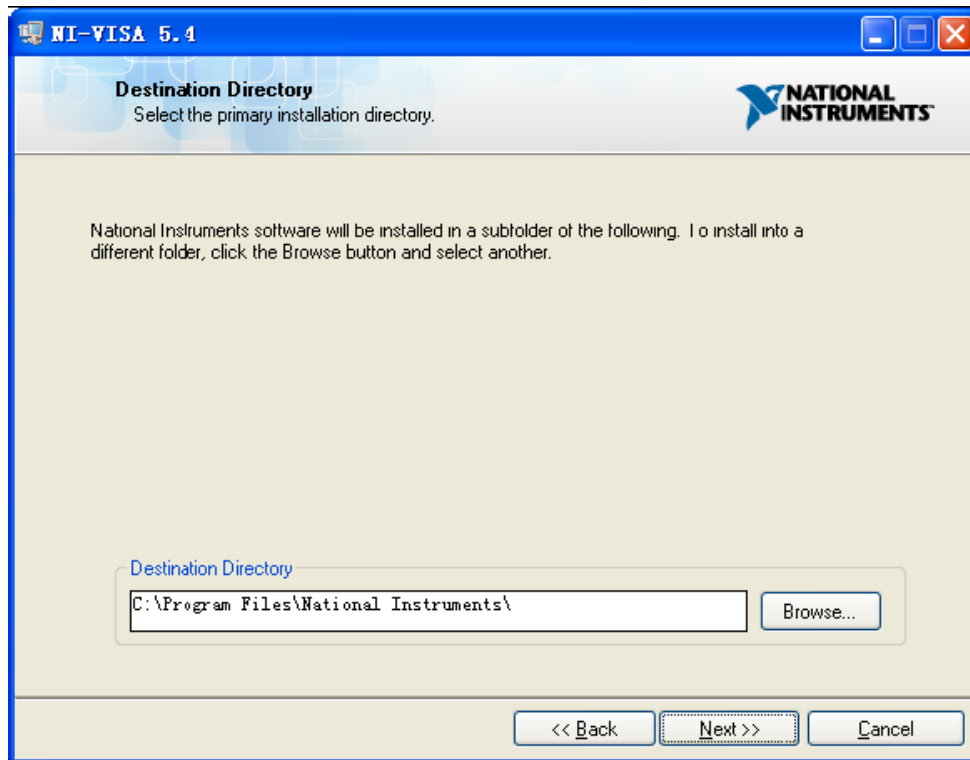
- b. Double click the visa540_full.exe, dialog shown as below:



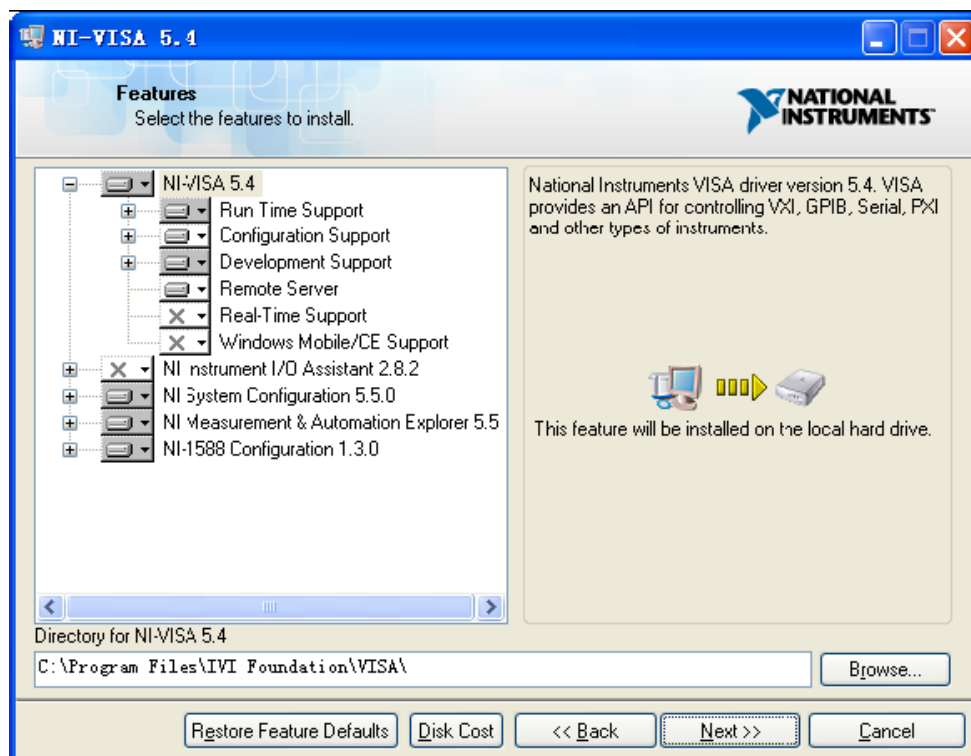
- c. Click Unzip, the install process will launch after unzipping files. If your computer needs to install the .NET Framework 4, it may auto start.



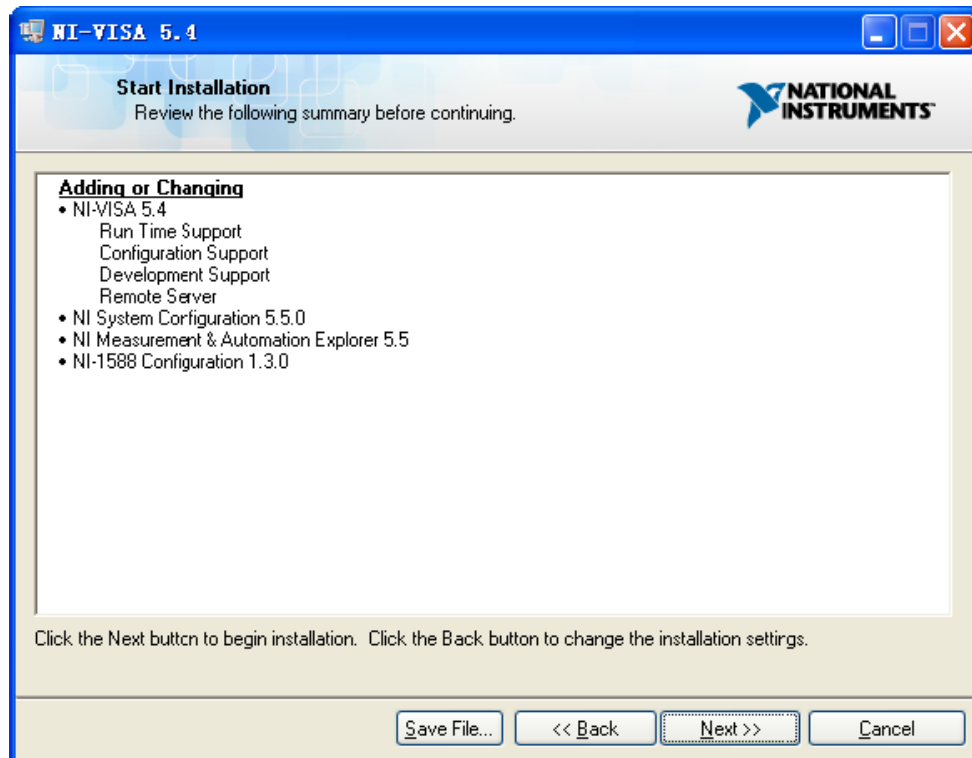
- d. The NI-VISA install dialog is shown above. Click Next to start the installation process.



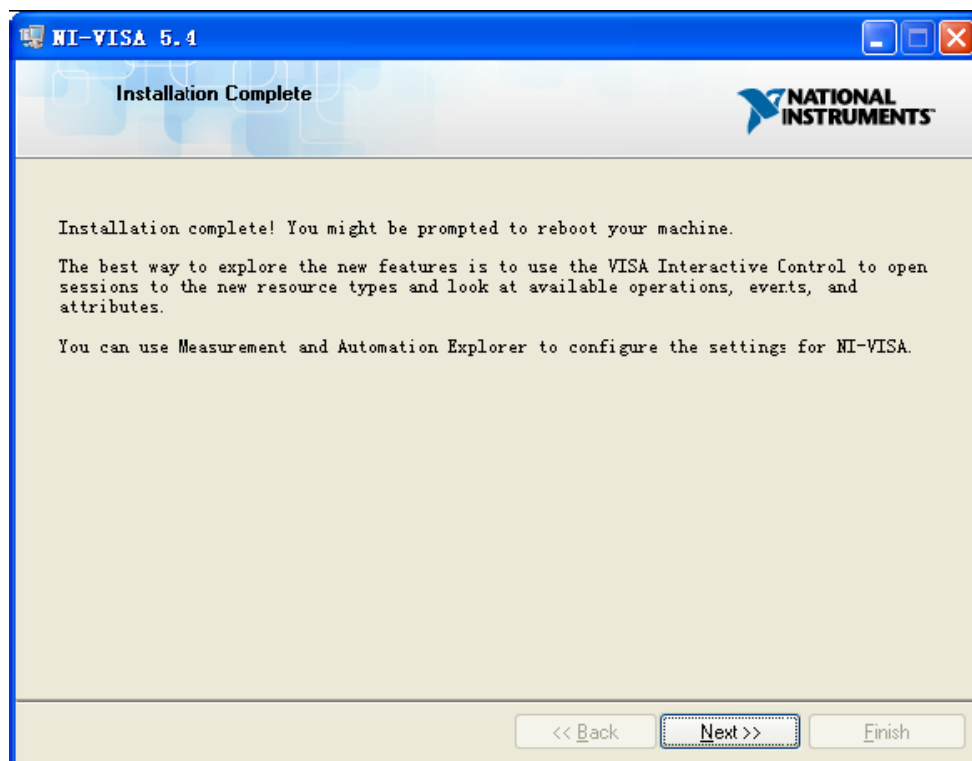
- e. Set the install path, default path is “C:\Program Files\National Instruments\”, you can change it, if you prefer. Click Next, dialog as shown above.



- f. Click Next twice, in the License Agreement dialog, select the “I accept the above 2 License Agreement(s).”, and click Next, dialog as shown below:



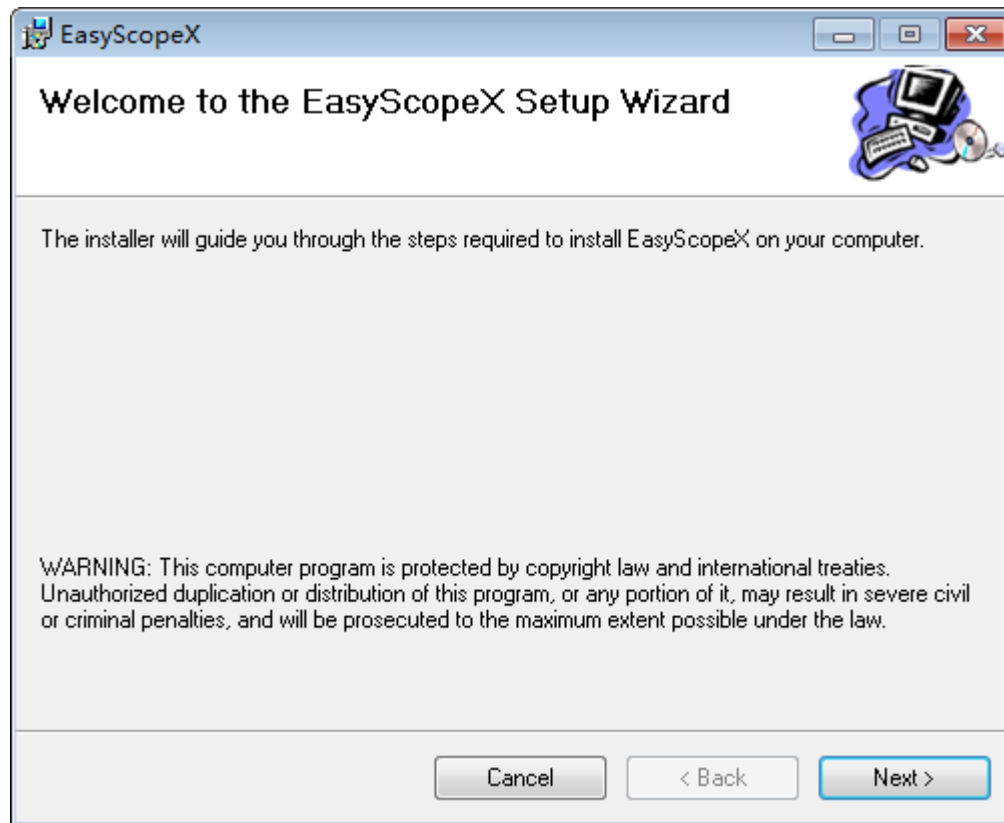
g. Click Next to begin installation.



h. Now the installation is complete, reboot your PC.

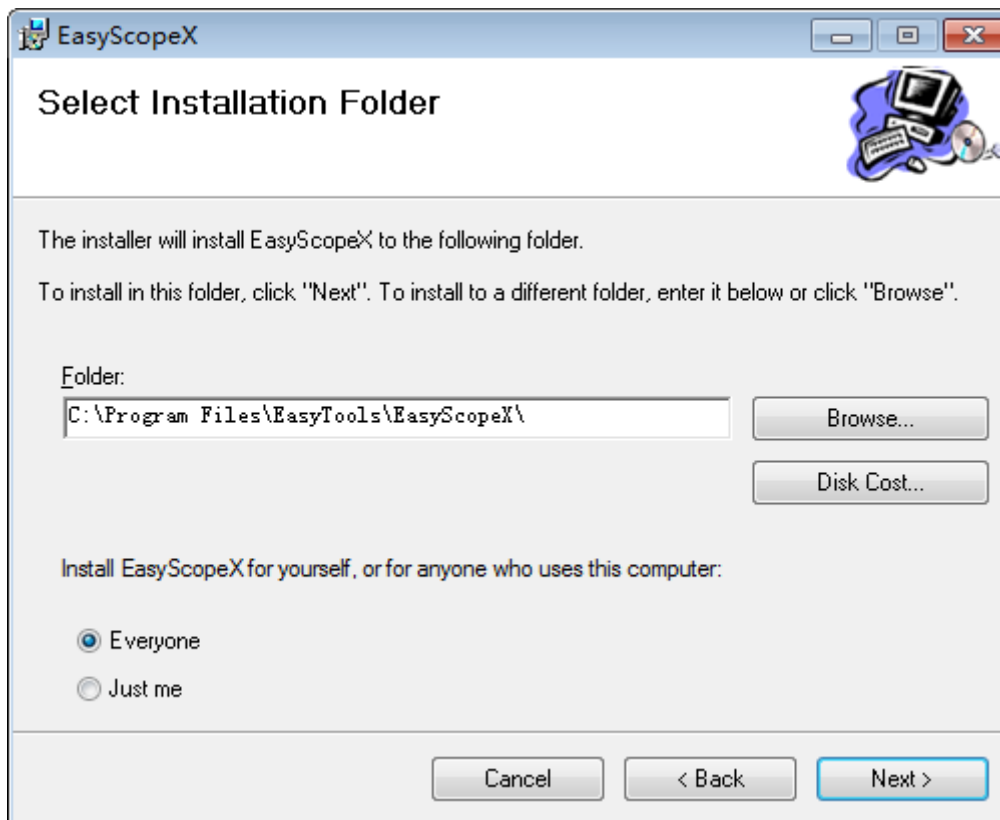
EasyScopeX Software Installation

- a. Download the latest EasyScopeX software. It is available on the product page for the appropriate SIGLENT Oscilloscope on the SIGLENT website (www.siglent.com)
- b. Double click on the EasyScopeX_setup.msi file. This will launch the install process, dialog as shown below:

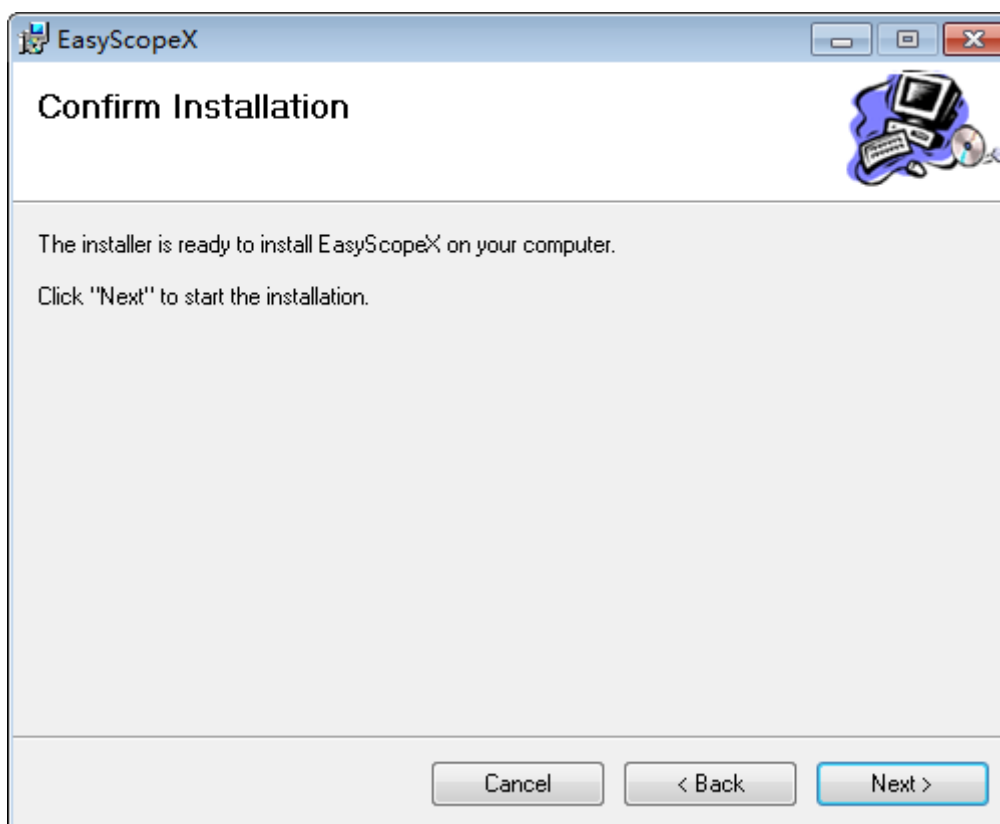


- c. Click Next, dialog as shown above:

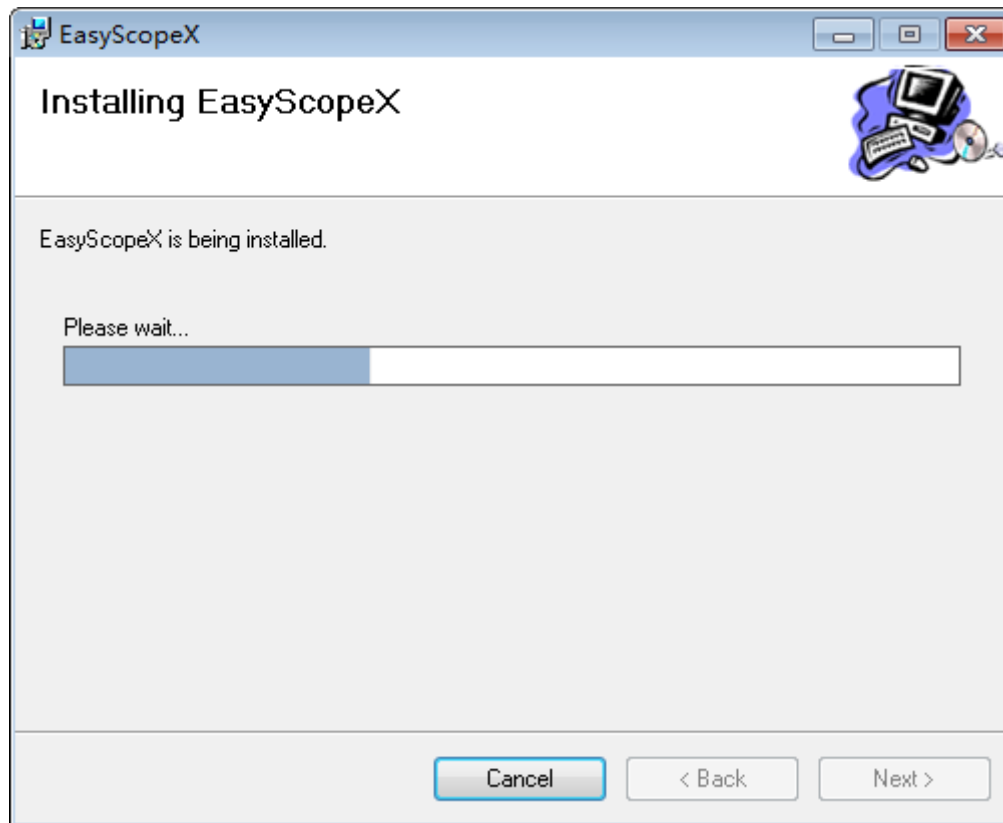
Notice: Win8 or Win10 users must choose "Everyone".



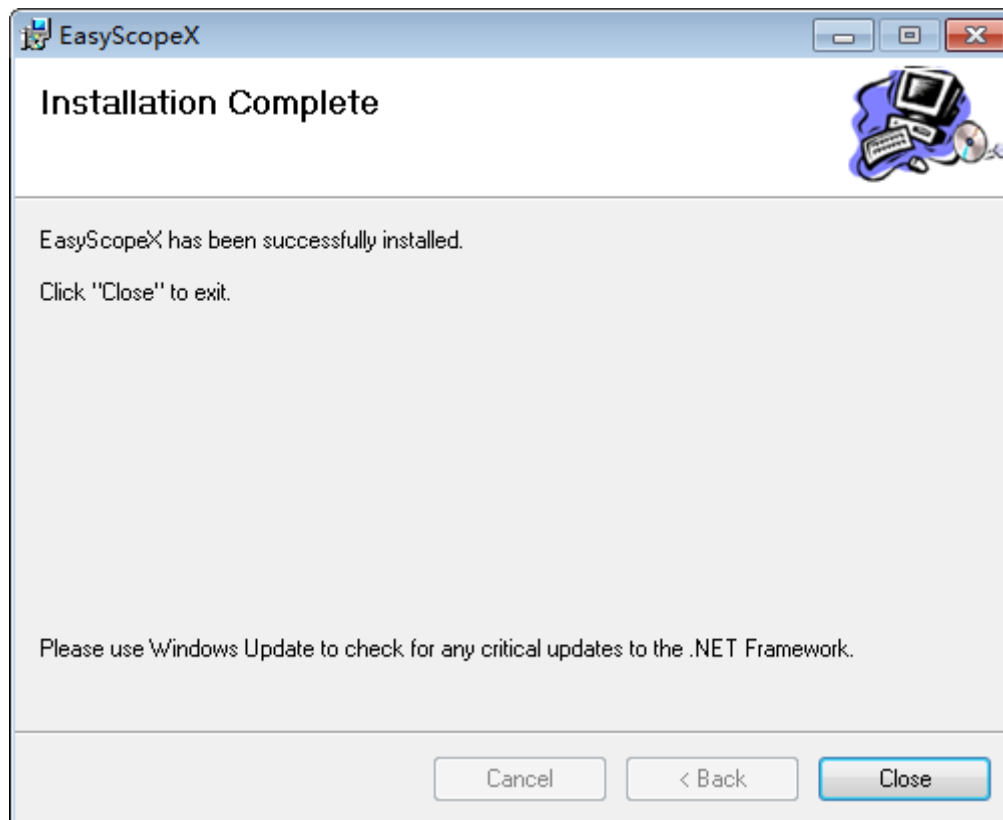
- d. Set the install path, default path is "C:\Program Files\EasyTools\EasyScopeX", you can change it, click Next, dialog as shown above.



- e. Click Next to start the installation.



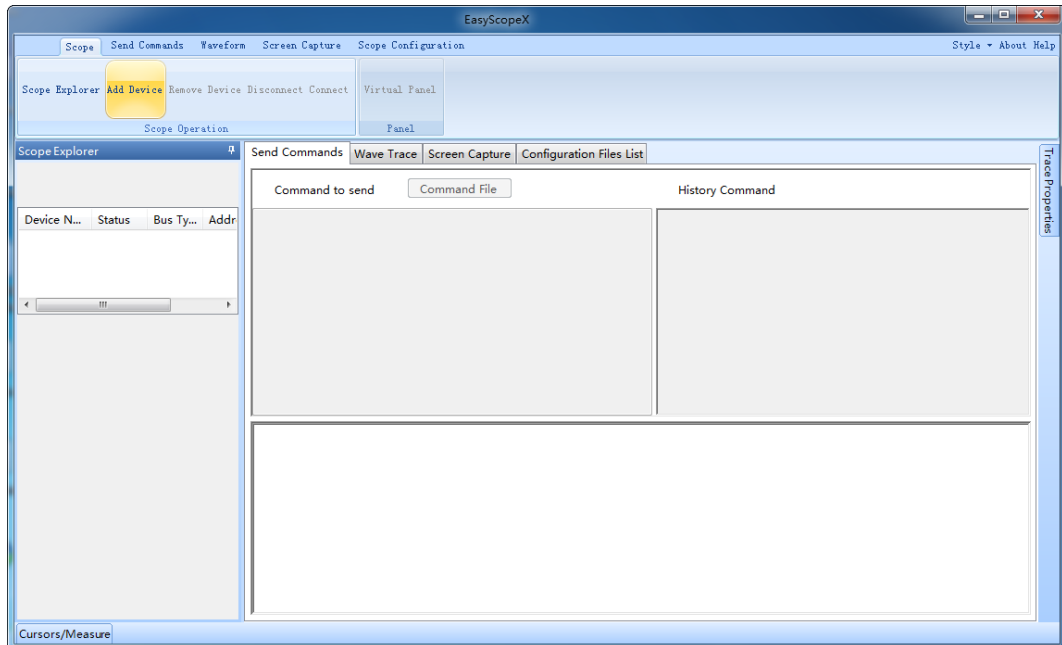
- f. Install Complete:



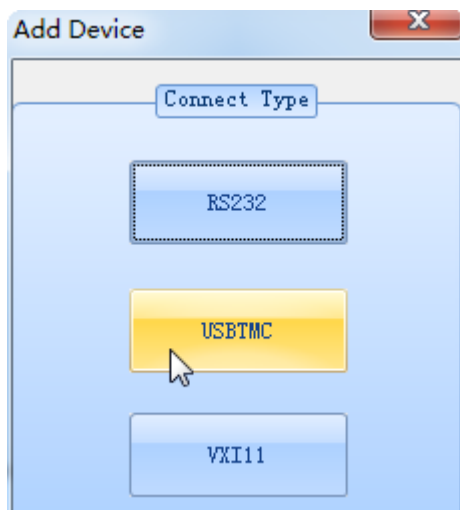
Connect the Device

Depending on your specific model your oscilloscope may be able to communicate with a PC through the USB or LAN interface. This manual takes the USB as an example. (For instructions to communicate with a PC through the LAN interface see the User Manual.)

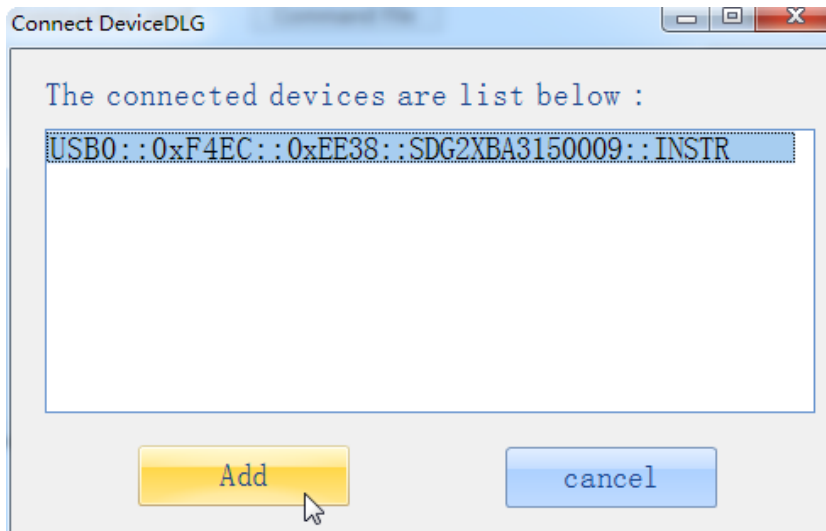
- a. The application EasyScopeX is shown below.



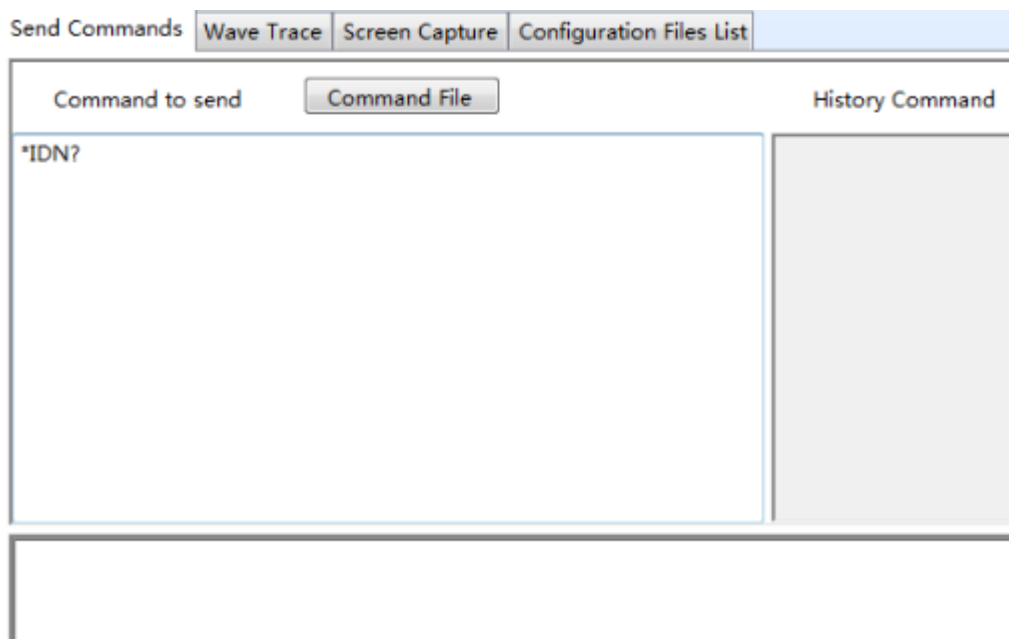
- b. Click Add Device Button, the Add Device dialog is shown below:



- c. Click USBTMC, the Connect Device Dialogs shown below:



- d. Click the Add button to add it to the Scope Explorer, and you can communicate with the device in the application. Input "*IDN?" in Send Commands text area, as below:



- e. Pressing the Enter key will return for you the device information, the result is shown below:

Send Commands	Wave Trace	Screen Capture	Configuration Files List
Command to send		Command File	History Command
			*IDN?
Siglent Technologies,SDG2042X,SDG2XBA3150009,2.01.01.08			